

# Save big with 2024 instant discounts\* on LED lighting for commercial customers

## LIGHTING TO GO

### TLEDs

2, 3, 4, 8ft and Ubend T8; 4ft T5(HO)  
(all types A/B/C/Dual mode) **No Limit\***



Up to **\$4 discount**

### 4-pin CFLEDs

G24q, Gx24q Type A; 2G11 Types  
A/B/C/Dual mode **No Limit\***



Up to **\$2 discount**

### HID LEDs

Mogul base (E39/40)  
Types B/C **No Limit\***



Up to **\$90 discount**

### LED Exterior Luminaires

Pole/Arm & Wall Mount, Landscape accent,  
Flood & Spot, and Fuel Pump Canopy  
Includes retrofits

**Limit: 30**



Up to **\$300 discount**

### Parking Garage Luminaires with Integral Controls

**Limit: 30**



Up to **\$75 discount**

### Stairwell and Passageway Luminaires with Integral Controls

**Limit: 30**



Up to **\$75 discount**

\*To qualify for discount: Recessed downlights must be ENERGYSTAR listed. All other fixtures and lamps must be DLC listed. Site address and purchaser contact information are required at the time of sale. Sales for lamp installations within Snohomish PUD territory are limited to 1,000 lamps to a unique business address within the same business day. Limit quantity of 30 fixtures per fixture type, including all SKUs or product numbers in the same fixture type to a unique business address within the same business day. Discounts are only available for existing structures; new construction projects are not eligible. Discounts valid through 12/31/2024. Reach out to a program team at [lightingtogo@cplusc.com](mailto:lightingtogo@cplusc.com) for more information.

**See a sales associate for more details.**

Provided by



# Save big with 2024 instant discounts\* on LED lighting for commercial customers

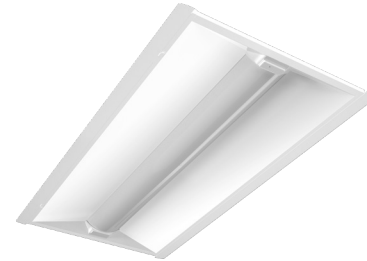
## LIGHTING TO GO



### LED Recessed Downlights

Includes retrofits  
Excludes pendants  
**Limit: 30**

Up to **\$20 discount**



### LED Troffers

1x4, 2x2, 2x4  
Includes retrofits  
**Limit: 30**

Up to **\$30 discount**  
Up to **\$70 discount**  
on fixtures with integral controls



### LED Wraps & Strips

Direct/Indirect  
Excludes retrofits  
**Limit: 30**

Up to **\$30 discount**



### LED High Bays

High and Low Bay  
Excludes retrofits  
**Limit: 30**

Up to **\$160 discount**  
Up to **\$270 discount**  
on fixtures with integral controls

\*To qualify for discount: Recessed downlights must be ENERGYSTAR listed. All other fixtures and lamps must be DLC listed. Site address and purchaser contact information are required at the time of sale. Sales for lamp installations within Snohomish PUD territory are limited to 1,000 lamps to a unique business address within the same business day. Limit quantity of 30 fixtures per fixture type, including all SKUs or product numbers in the same fixture type to a unique business address within the same business day. Discounts are only available for existing structures; new construction projects are not eligible. Discounts valid through 12/31/2024. Reach out to a program team at [lightingtogo@cplusc.com](mailto:lightingtogo@cplusc.com) for more information.

See a sales associate for more details.

Provided by

